



OUR HONG KONG  
FOUNDATION  
團結香港基金



公共政策研究院  
PUBLIC POLICY INSTITUTE

## Making medical-social integration a reality

Jockey Club Community eHealth Care Project Symposium | 9th June 2022

Dr Pamela Tin, Our Hong Kong Foundation

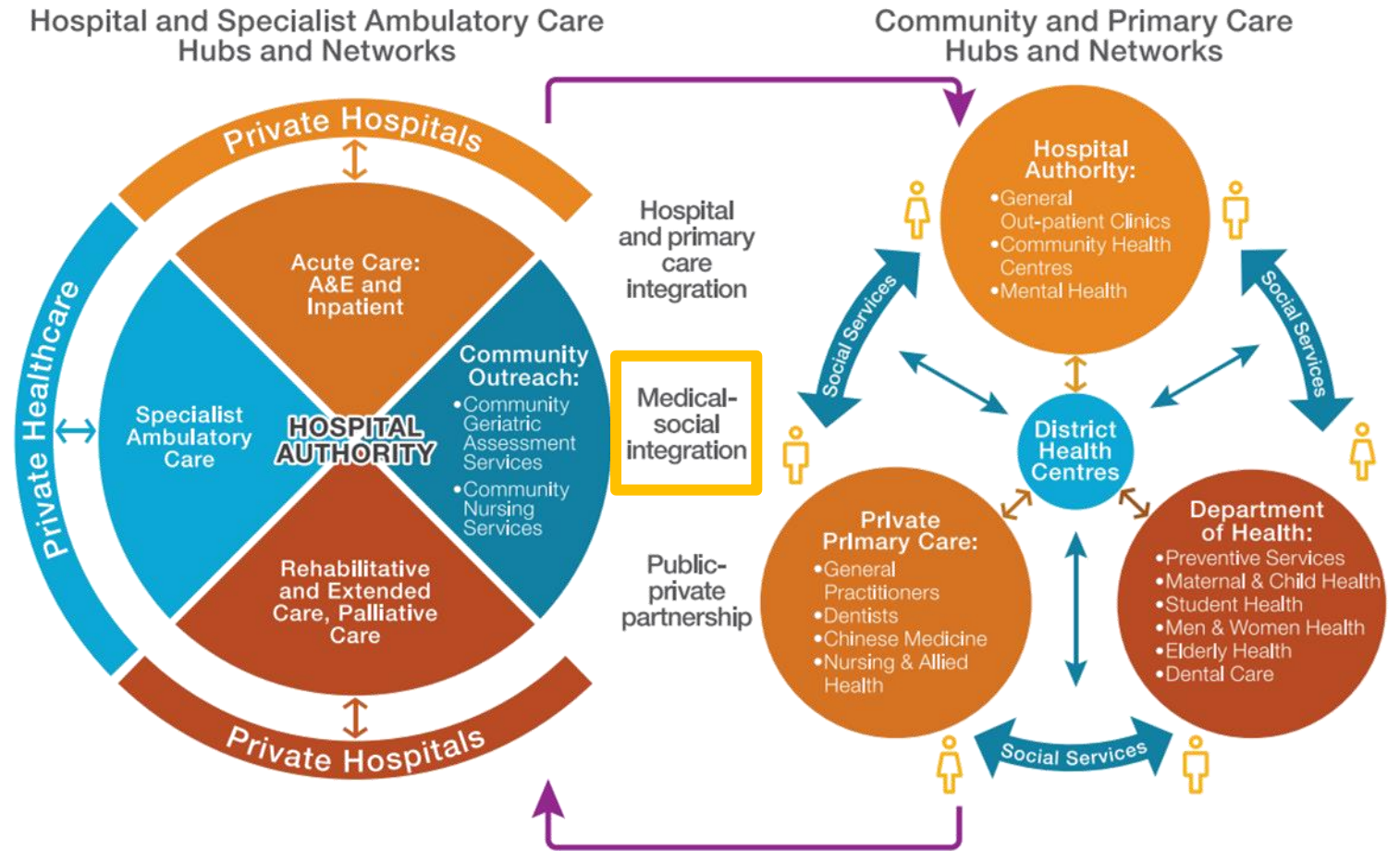
Research • Advocate • Engage  
研究 • 倡議 • 推動



# OHKF's vision – A 'fit for purpose' health system


Emerging health needs of a rapidly ageing population with increasing prevalence of chronic conditions necessitates Hong Kong's health system to become:

- **Person-centred**
- **Primary care-led**
- **Integrated**




SIMPLE REPRESENTATION OF CONCEPTUAL MODEL OF INTEGRATED HEALTH SERVICES

# Symptom: an underdeveloped primary healthcare system and inadequate support in community settings

 ~50% admissions in the public sector could have been **prevented**



 among older patients, ~20% **avoidable readmission** in 30 days



# Remedy (1): medical-social integration @ micro level

## Person-centred care: understanding and catering for needs

### Integrated Care and Discharge Support Program (for Elderly Patients) (ICDS)

#### Medical: HA Discharge Planning Team

- **Identify** high-risk patients
- **Interview** patients and carers; formulate personalised care and discharge plan
- **Collaborate** and **coordinate** with community care services



#### Community: Home Support Team/ Case Management

- Transitional home support services
- Classroom carer training
- Medical and emotional support



### Impact



- #accident and emergency (A&E) attendance
- number of admissions to hospital via A&E



- functional capacity/quality of life
- ability in performing daily self-care activities



# Remedy (2): medical-social integration @ meso level

## Service provision that promotes integration: establishing multidisciplinary teams

### Sai Kung District Community Centre: Tele-healthcare and Medication Guidance Pilot Project



“ There are many remote villages in Sai Kung where many elderly live in. Many of them are ageing or affected by diseases and cannot get the medical services they deserve. ”



西貢區社區中心  
SAI KUNG DISTRICT COMMUNITY CENTRE

擇善  
ZESHAN  
FOUNDATION

# Remedy (3): medical-social integration @ macro level

## A vision for integration: setting up a team to promote integrated care

### Singapore: Agency for Integrated Care (AIC)

- an independent corporate entity under MOH Holdings and assumed role of 'National Care Integrator'
- **Functions:**
  - coordinate the delivery of aged care services
  - enhance service development and capability-building across both the health and social domains
- **Target groups:**



Healthy seniors

Disabled seniors

Bedbound seniors

Caregivers

- **Major Services:**





OUR HONG KONG  
FOUNDATION  
團結香港基金



公共政策研究院  
PUBLIC POLICY INSTITUTE

Thank you!

---

